

PHOTOMETRIC TEST REPORT

ATTICUS 900 POLISHED CHROME

astro

LIGHT EFFICIENCY:

58 Lumen/Watt

LIGHT QUALITY:

CRI: 83.3

COLOR TEMPERATURE:

2716 K

OUTPUT: 976 lm

PEAK: 332 cd

POWER: 16.8 W

PF: 0.92

Tracking number: [n/a](#)

Product name:

Atticus 900 Polished Chrome

Item number:

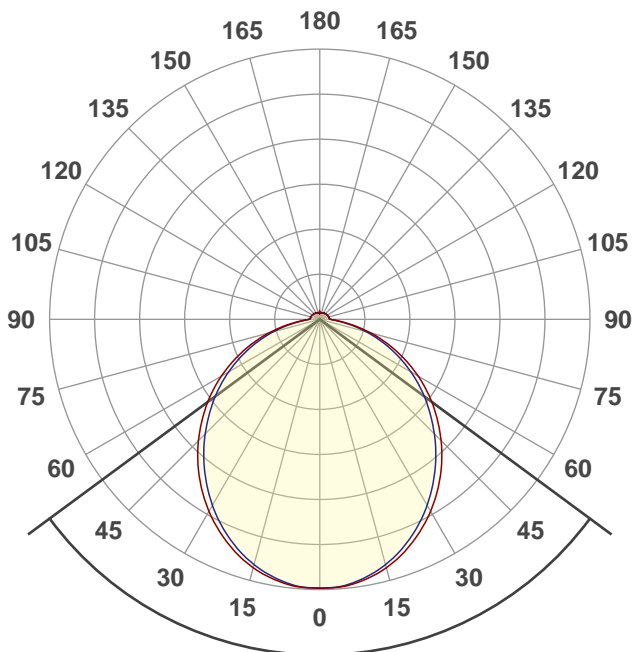
1440002

Date and time:

10/02/2021 16:30:51

Description:

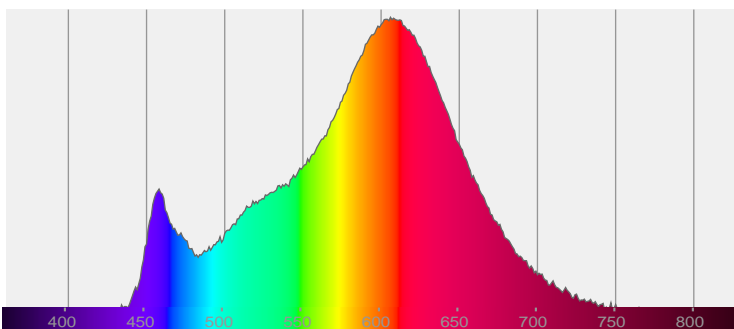
IP44 Bathroom Wall Light



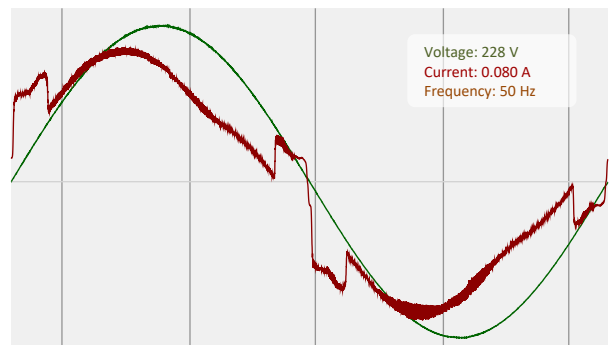
107.2°

CIE 1931
x: 0.458
y: 0.408

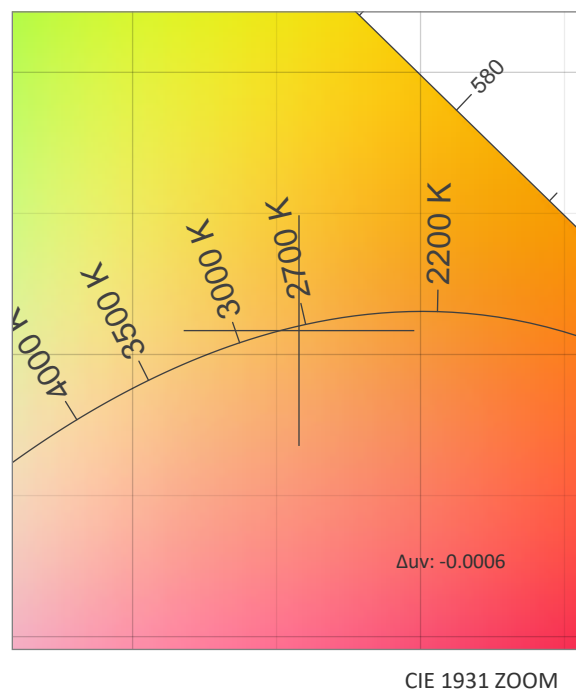
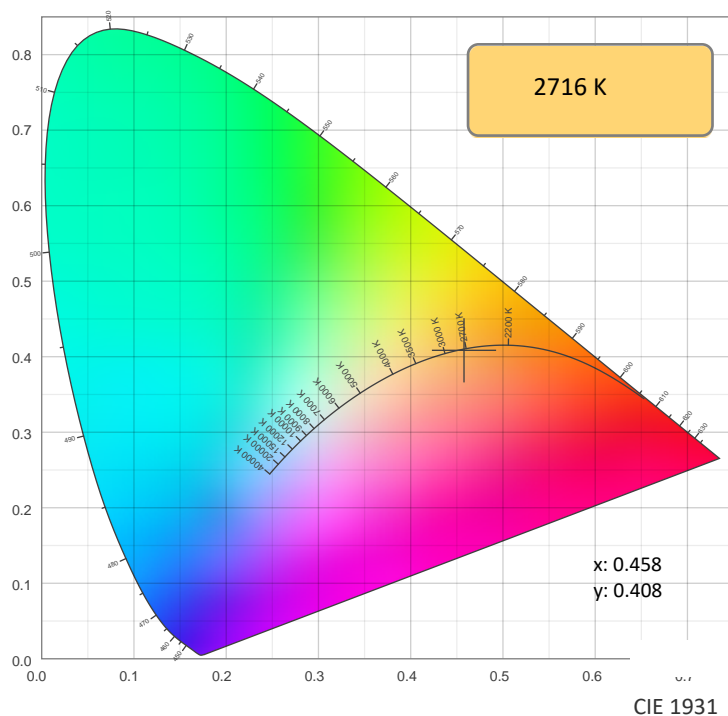
SPECTRA



POWER

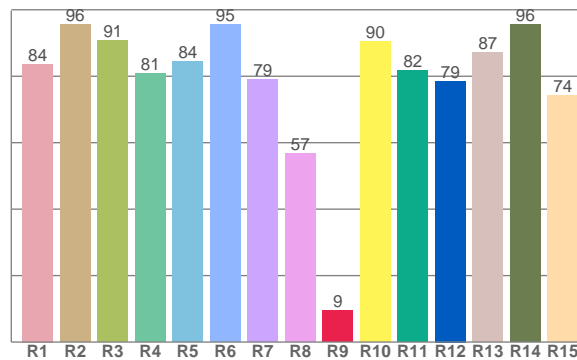
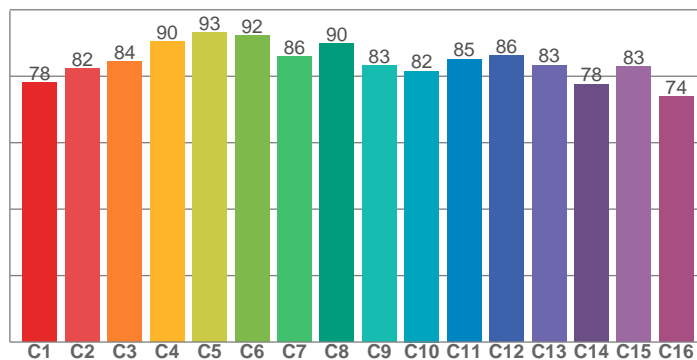


COLOR DETAILS



TM30: 84.3

CRI: 83.3 (R1-R8)



CRI R values, only R1-R8 are used to calculate final CRI value

R1	R2	R3	R4	R5	R6	R7	R8	R9	R10	R11	R12	R13	R14	R15
83.7	95.6	90.9	80.7	84.4	95.5	79.1	56.7	9.5	90.4	81.6	78.6	87.1	95.7	74.3

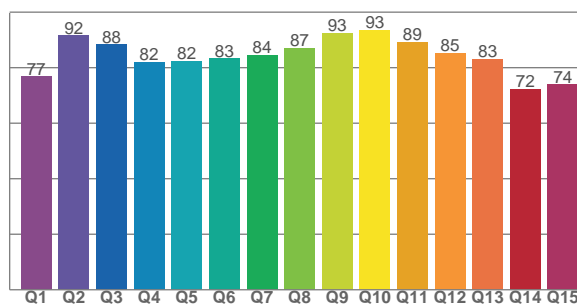
TM30 C values, 16 binned values out of total of 99 C values

C1	C2	C3	C4	C5	C6	C7	C8	C9	C10	C11	C12	C13	C14	C15	C16
78.1	82.4	84.4	90.4	93.2	92.3	86.0	89.8	83.3	81.6	85.1	86.1	83.4	77.7	82.9	73.9

CQS Q values

Q1	Q2	Q3	Q4	Q5	Q6	Q7	Q8	Q9	Q10	Q11	Q12	Q13	Q14	Q15
76.7	91.6	88.3	81.9	82.3	83.3	84.5	87.1	92.5	93.5	89.3	85.2	83.0	72.3	74.0

CQS: 83.0



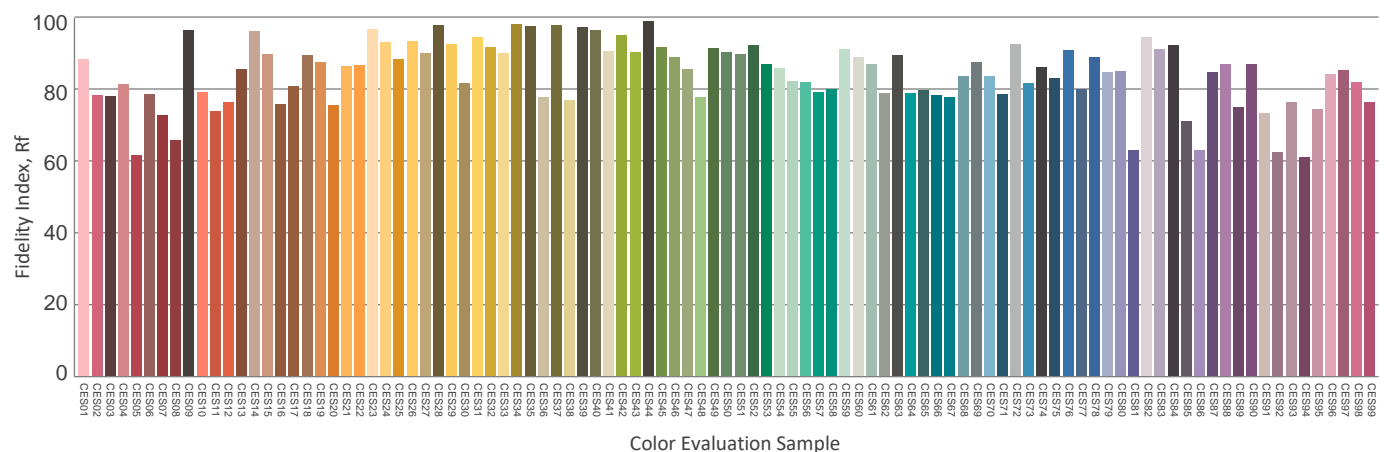
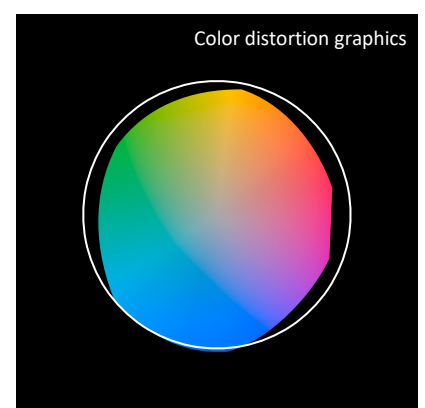
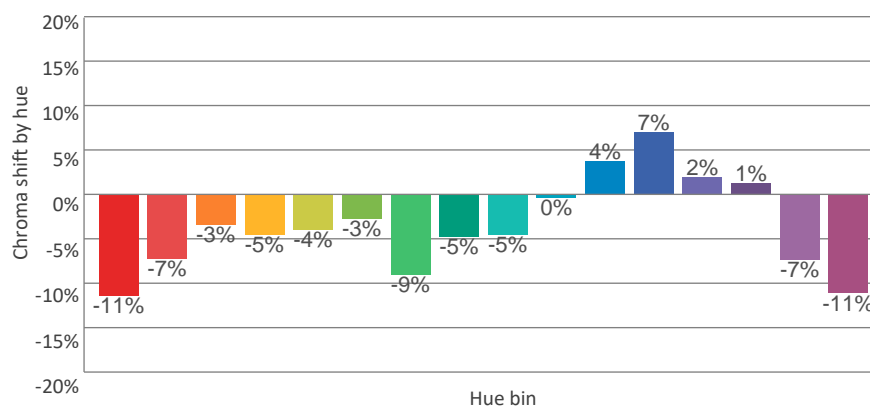
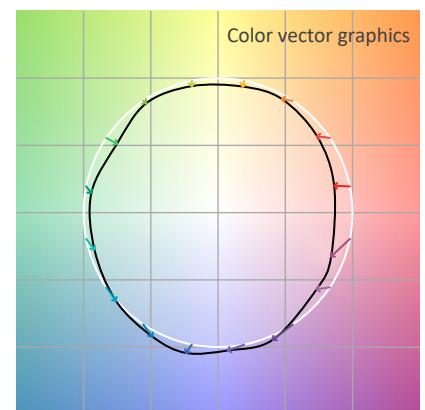
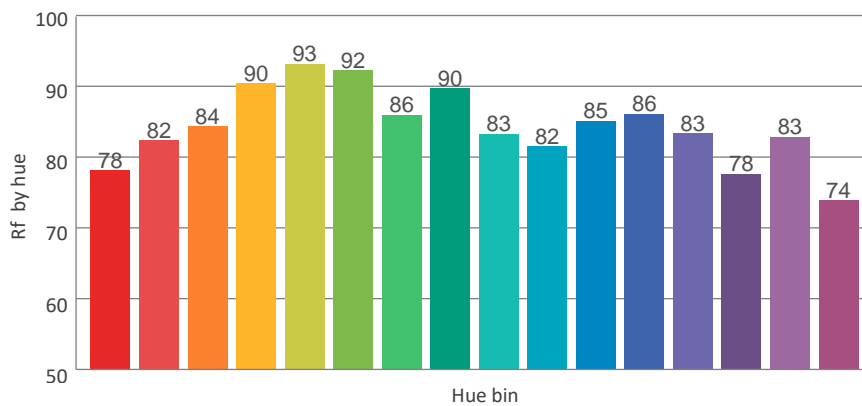
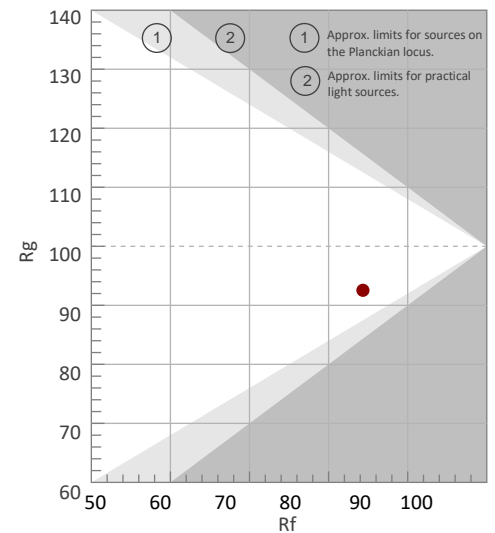
COLOR PARAMETERS

Color temperature	Color rendering index	Red component	Color fidelity	Color gamut	Color quality scale	Color coordinate cie 1931	Color coordinate cie 1931	Color coordinate	Color coordinate	Color deviation from black body
CCT	CRI	CRI R9	TM30 Rf	TM30 Rg	CQS	x	y	u	v	Δuv
2716 K	83.3	9.5	84.3	92.5	83.0	0.458	0.408	0.262	0.351	-0.0006

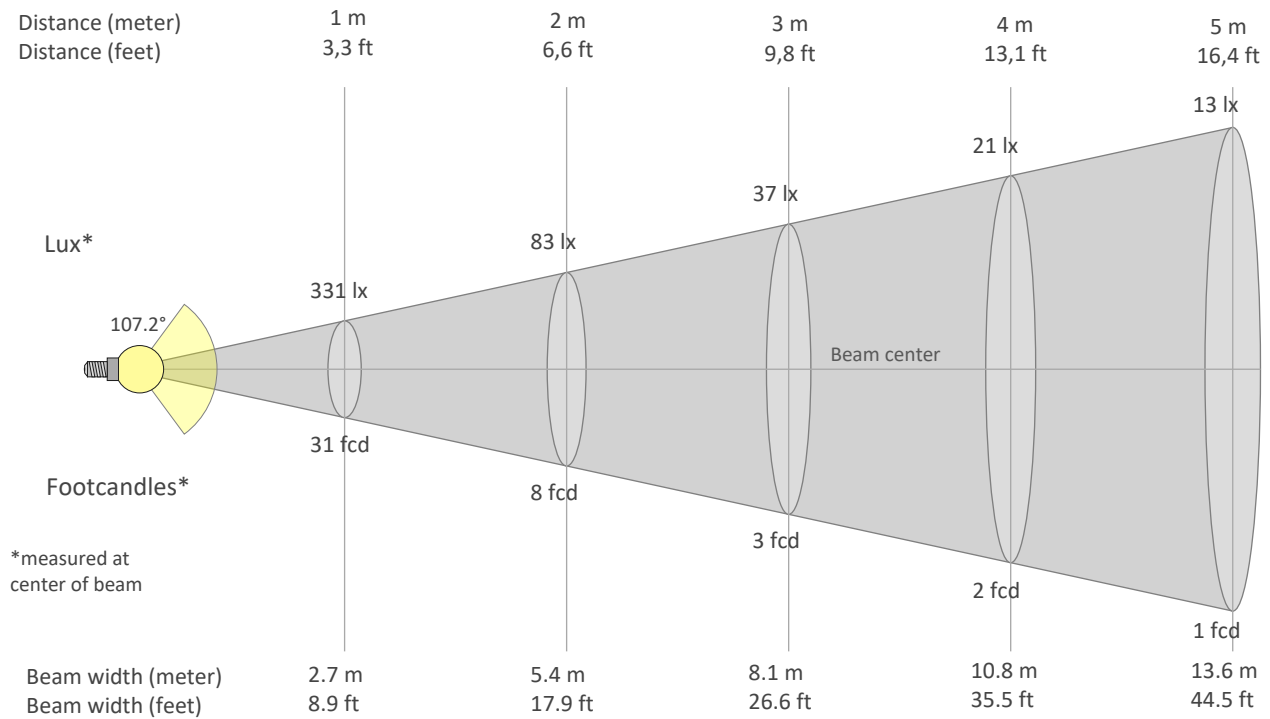
Rf 84.3
Fidelity index Rf

Rg 92.5
Gammut index Rg

Hue Bin	Graphic shifts (%)		
	R _f	Chroma	Hue
1	78	-11%	3%
2	82	-7%	6%
3	84	-3%	7%
4	90	-5%	0%
5	93	-4%	1%
6	92	-3%	-1%
7	86	-9%	-1%
8	90	-5%	4%
9	83	-5%	9%
10	82	0%	12%
11	85	4%	11%
12	86	7%	-3%
13	83	2%	-13%
14	78	1%	-19%
15	83	-7%	-7%
16	74	-11%	-16%



BEAM DETAILS



Beam intensities from 1-20m

1m	2m	3m	4m	5m	6m	7m	8m	9m	10m	11m	12m	13m	14m	15m	16m	17m	18m	19m	20m
3.3ft	6.6ft	9.8ft	13.1ft	16.4ft	19.7ft	23ft	26.2ft	29.5ft	32.8ft	36.1ft	39.4ft	42.7ft	45.9ft	49.2ft	52.5ft	55.8ft	59.1ft	62.3ft	65.6ft
331lx	83lx	37lx	21lx	13lx	9lx	7lx	5lx	4lx	3lx	3lx	2lx	2lx	2lx	1lx	1lx	1lx	1lx	1lx	1lx
30.8fcd	7.7fcd	3.4fcd	1.9fcd	1.2fcd	0.9fcd	0.6fcd	0.5fcd	0.4fcd	0.3fcd	0.3fcd	0.2fcd	0.2fcd	0.2fcd	0.1fcd	0.1fcd	0.1fcd	0.1fcd	0.1fcd	0.1fcd

Intensities in 0° c-plane

0°	5°	10°	15°	20°	25°	30°	35°	40°	45°	50°	55°	60°	65°	70°	75°	80°	85°	90°	95°
331	330	325	317	305	290	273	254	234	212	188	165	140	115	90	65	42	24	14	12
100%	100%	98%	96%	92%	88%	82%	77%	70%	64%	57%	50%	42%	35%	27%	20%	13%	7%	4%	4%

Intensities in 90° c-plane

0°	5°	10°	15°	20°	25°	30°	35°	40°	45°	50°	55°	60°	65°	70°	75°	80°	85°	90°	95°
331	329	323	313	299	283	265	244	222	200	177	154	130	106	82	60	39	23	14	12
100%	99%	97%	94%	90%	85%	80%	74%	67%	60%	53%	46%	39%	32%	25%	18%	12%	7%	4%	4%

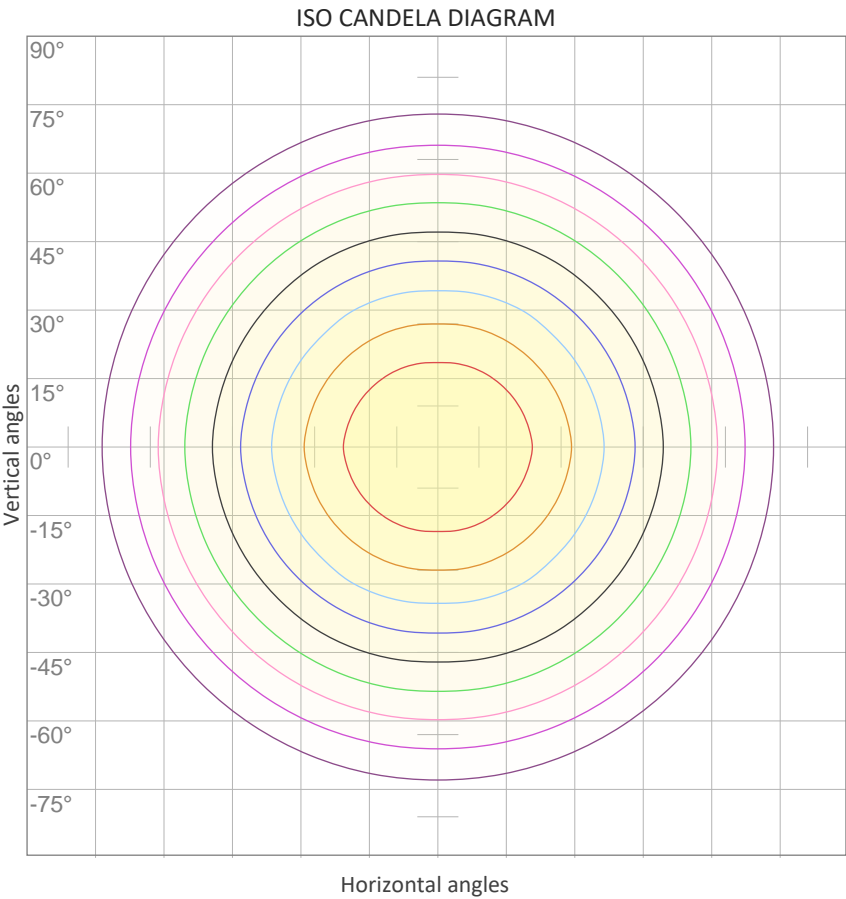
Intensities in 180° c-plane

0°	5°	10°	15°	20°	25°	30°	35°	40°	45°	50°	55°	60°	65°	70°	75°	80°	85°	90°	95°
331	330	325	317	305	290	273	254	234	212	188	165	140	115	90	65	42	24	14	12
100%	100%	98%	96%	92%	88%	82%	77%	70%	64%	57%	50%	42%	35%	27%	20%	13%	7%	4%	4%

Intensities in 270° c-plane

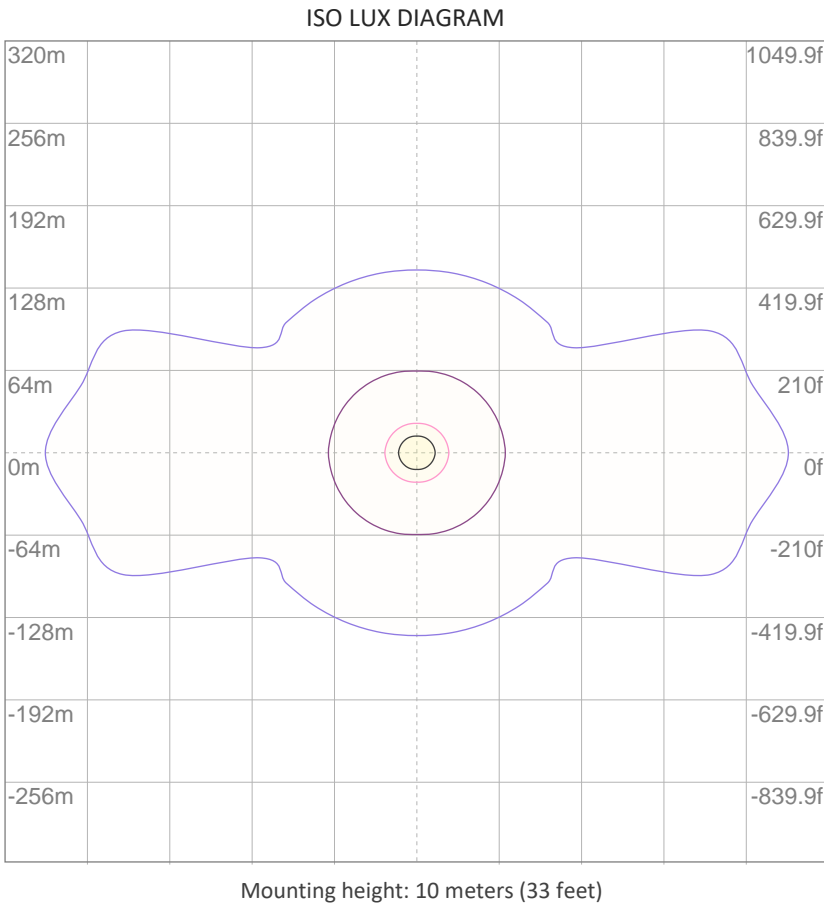
0°	5°	10°	15°	20°	25°	30°	35°	40°	45°	50°	55°	60°	65°	70°	75°	80°	85°	90°	95°
331	329	323	313	299	283	265	244	222	200	177	154	130	106	82	60	39	23	14	12
100%	99%	97%	94%	90%	85%	80%	74%	67%	60%	53%	46%	39%	32%	25%	18%	12%	7%	4%	4%

Beam angle 50%	Field angle 10%	Cutoff angle 2,5%	Intensity ratio in 120° cone	Intensity ratio in 90° cone
107.2°	163.8°	336.3°	72.7%	50.1%



10%	33 cd
20%	66 cd
30%	99 cd
40%	133 cd
50%	166 cd
60%	199 cd
70%	232 cd
80%	265 cd
90%	298 cd

Conditions:
Number of c-planes: 8
Candela at center: 331 cd



3%	99.4m lx
5%	0.166 lx
10%	0.331 lx
30%	0.994 lx
50%	{LUX_10M50} lx

Conditions:
Number of c-planes: 8
Lux at center: 3.31 lx

Lux distribution on a surface when lamp is mounted at 10 meters from the surface.

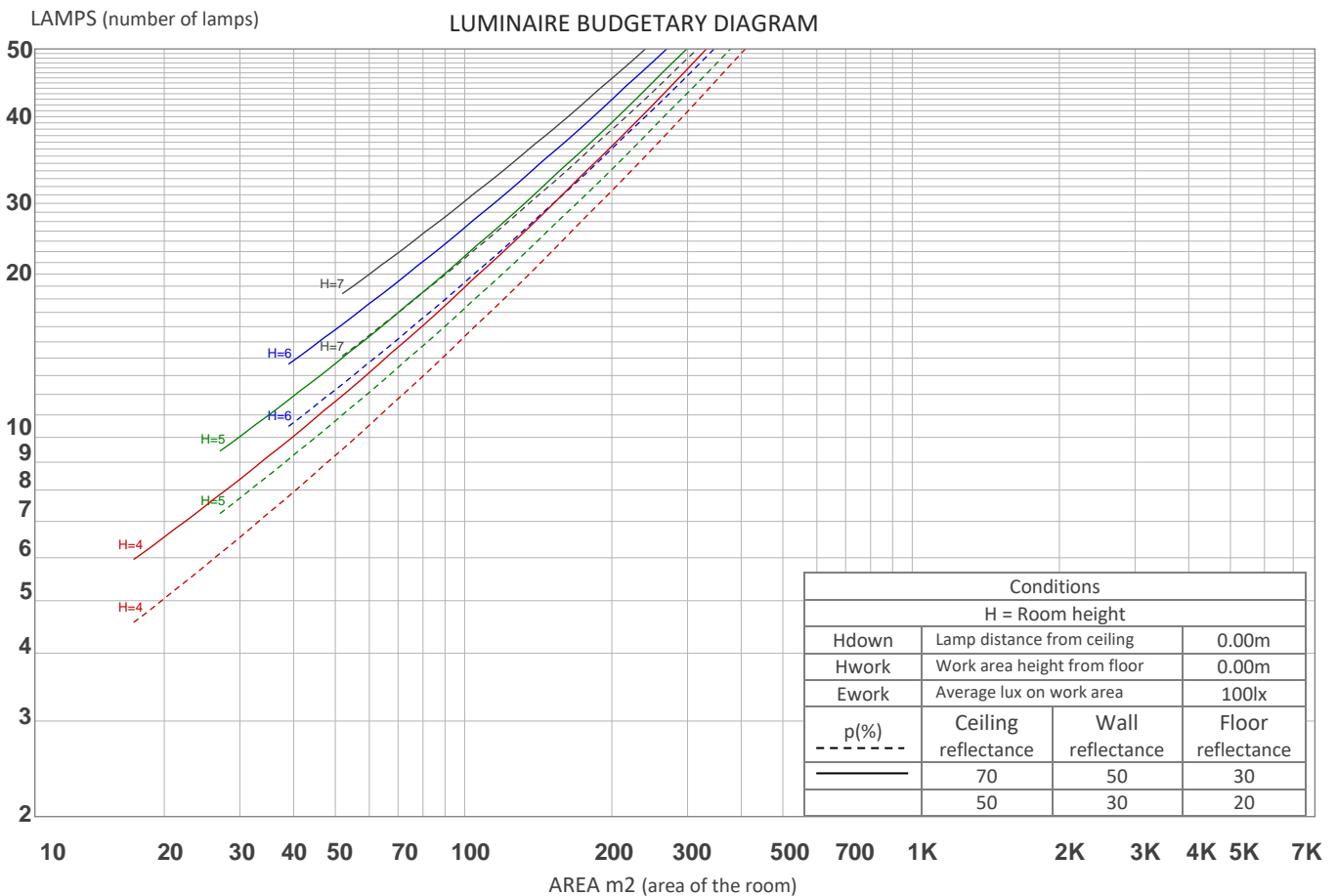
UGR

GLARE EVALUATION ACCORDING TO UGR

p Ceiling		70	70	50	50	30	70	70	50	50	30
p Walls		50	30	50	30	30	50	30	50	30	30
p Floor		20	20	20	20	20	20	20	20	20	20
Room size X Y		Viewing direction at right angles to lamp axis					Viewing direction parallel to lamp axis				
2H	2H	15.3	16.4	15.6	16.8	17.2	16.7	17.9	17.1	18.3	18.6
	3H	16.3	17.5	16.8	17.9	18.2	18.1	19.3	18.6	19.7	20.0
	4H	16.7	17.8	17.2	18.2	18.6	18.7	19.8	19.2	20.2	20.6
	6H	17.0	18.0	17.4	18.4	18.9	19.2	20.2	19.7	20.6	21.1
	8H	17.0	18.0	17.5	18.4	18.9	19.4	20.4	19.8	20.8	21.3
	12H	17.1	18.0	17.5	18.4	19.0	19.5	20.5	20.0	20.9	21.5
4H	2H	15.8	16.9	16.3	17.3	17.7	17.0	18.1	17.5	18.5	18.9
	3H	17.1	18.0	17.6	18.5	19.0	18.6	19.6	19.1	20.0	20.6
	4H	17.5	18.4	18.0	18.9	19.5	19.2	20.2	19.8	20.6	21.3
	6H	17.8	18.7	18.4	19.1	19.6	19.8	20.6	20.4	21.1	21.6
	8H	17.9	18.7	18.5	19.1	19.6	20.0	20.7	20.6	21.2	21.7
	12H	18.0	18.6	18.6	19.1	19.7	20.2	20.8	20.8	21.3	21.9
8H	4H	17.7	18.5	18.3	18.9	19.4	19.3	20.0	19.9	20.5	21.0
	6H	18.2	18.7	18.7	19.3	19.9	20.0	20.5	20.6	21.1	21.7
	8H	18.3	18.8	18.9	19.4	20.2	20.2	20.7	20.8	21.4	22.1
	12H	18.4	18.8	19.1	19.5	20.2	20.5	20.9	21.1	21.5	22.2
12H	4H	17.7	18.3	18.3	18.9	19.5	19.3	19.9	19.9	20.4	21.0
	6H	18.2	18.7	18.8	19.3	20.1	20.0	20.5	20.6	21.1	21.8
	8H	18.4	18.8	19.0	19.4	20.1	20.2	20.7	20.9	21.3	22.0
Variation of the observer position for the luminaire distance S											
S = 1.0H		0.1 / -0.2					0.1 / -0.2				
S = 1.5H		0.3 / -0.5					0.4 / -0.5				
S = 2.0H		0.7 / -0.9					1.0 / -1.0				
Standard table		n/a					n/a				
Correction summand		n/a					n/a				
Corrected glare indices referring to 976 lm total luminous flux											

COEFFICIENTS OF UTILIZATION

Ceiling reflectance	80				70				50			30			10			0
Wall reflectance	70	50	30	10	70	50	30	10	50	30	10	50	30	10	50	30	10	0
Floor reflectance	20	20	20	20	20	20	20	20	20	20	20	20	20	20	20	20	20	0
RCR	(RCR: Room Cavity Ratio) Room Values are expressed as percentage of Lumens delivered to the task surface																	
0	117	117	117	117	114	114	114	114	107	107	107	101	101	101	96	96	96	93
1	107	102	98	94	103	99	95	92	94	90	87	89	86	84	84	82	80	77
2	97	89	82	76	94	86	80	75	82	76	72	77	73	69	73	70	67	64
3	89	78	70	63	85	76	68	62	72	66	60	68	63	58	65	60	57	54
4	81	69	60	54	78	67	59	53	64	57	51	61	55	50	58	53	49	46
5	75	62	53	46	72	60	52	46	57	50	44	55	48	43	52	47	42	40
6	69	56	47	40	66	54	46	40	52	44	39	49	43	38	47	42	37	35
7	64	50	42	36	62	49	41	35	47	40	35	45	39	34	43	37	33	31
8	59	46	38	32	57	45	37	31	43	36	31	41	35	30	40	34	30	28
9	56	42	34	29	54	41	34	28	40	33	28	38	32	27	37	31	27	25
10	52	39	31	26	50	38	31	26	37	30	25	35	29	25	34	28	24	23



ZONAL LUMEN SUMMARY

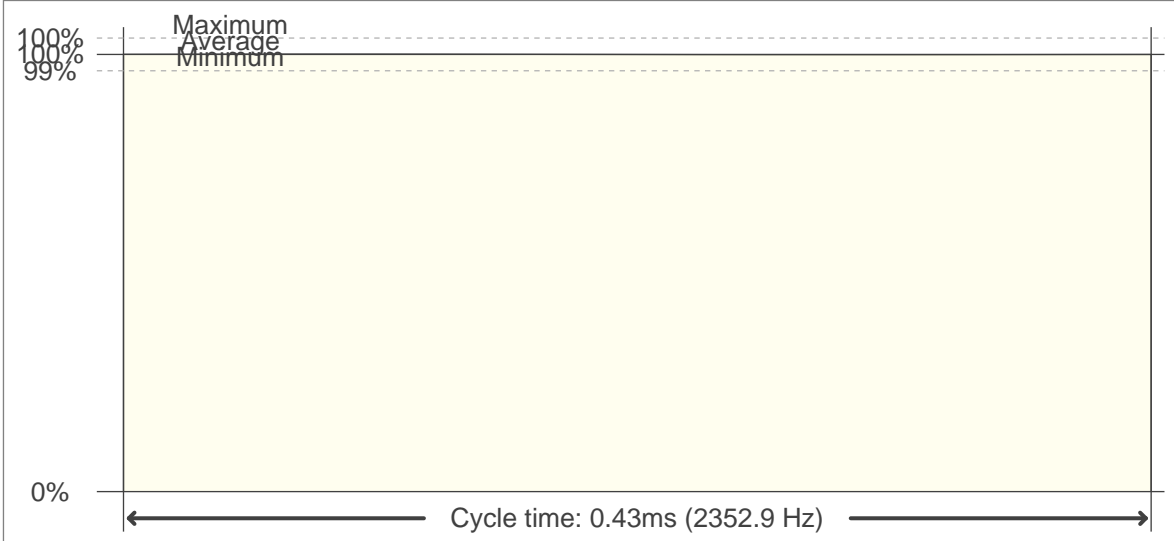
0°-10°	10°-20°	20°-30°	30°-40°	40°-50°	50°-60°	60°-70°	70°-80°	80°-90°
31.3 lm	88.8 lm	132 lm	156 lm	159 lm	142 lm	109 lm	66.0 lm	25.9 lm
90°-100°	100°-110°	110°-120°	120°-130°	130°-140°	140°-150°	150°-160°	160°-170°	170°-180°
13.1 lm	12.1 lm	10.8 lm	9.27 lm	7.43 lm	5.81 lm	3.98 lm	2.34 lm	0.775 lm

FLICKER

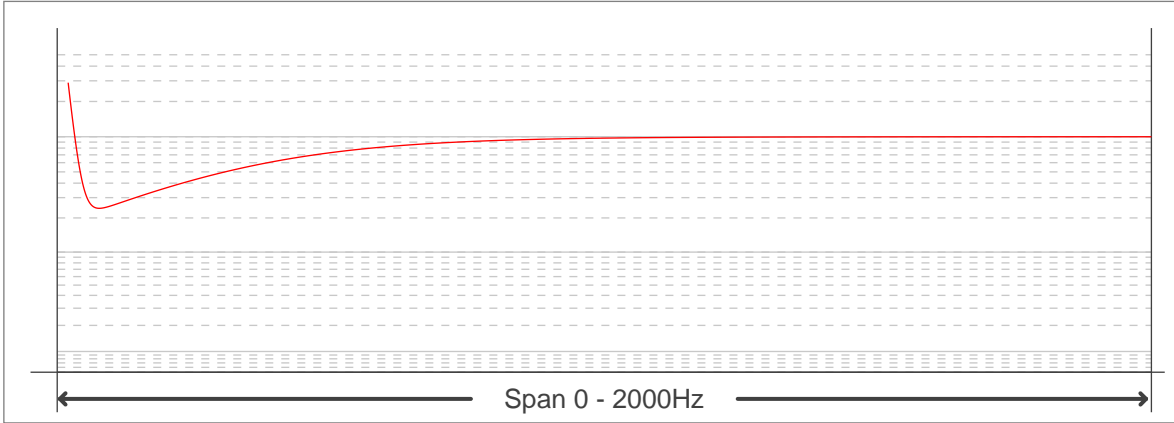
FLICKER CURVE (COMPLETE SAMPLED FLICKER)



FLICKER FRAME (FRAME OF ONE FLICKER PERIOD)



FLICKER FFT (FREQUENCY SCOPE OF FLICKER CURVE)



FLICKER RESULTS:

Flicker frequency:	2352.94 Hz
Flicker index:	0
Flicker percentage:	0.15 %
SVM: (Visual flicker)	0

FLICKER CONDITIONS:

Sample rate:	40000 samples/second
--------------	----------------------